

Stratodesk NoTouch Center

www.stratodesk.com

contact@stratodesk.com

US:  +1 (415) 946 4029

EU:  +43 (463) 890298

Stratodesk NoTouch Center is the endpoint management solution for Stratodesk NoTouch OS. Capable of managing your devices on premises or in the Cloud, Stratodesk NoTouch Center manages Stratodesk NoTouch OS endpoints, both x86 and ARM/Raspberry Pi devices in the same environment.



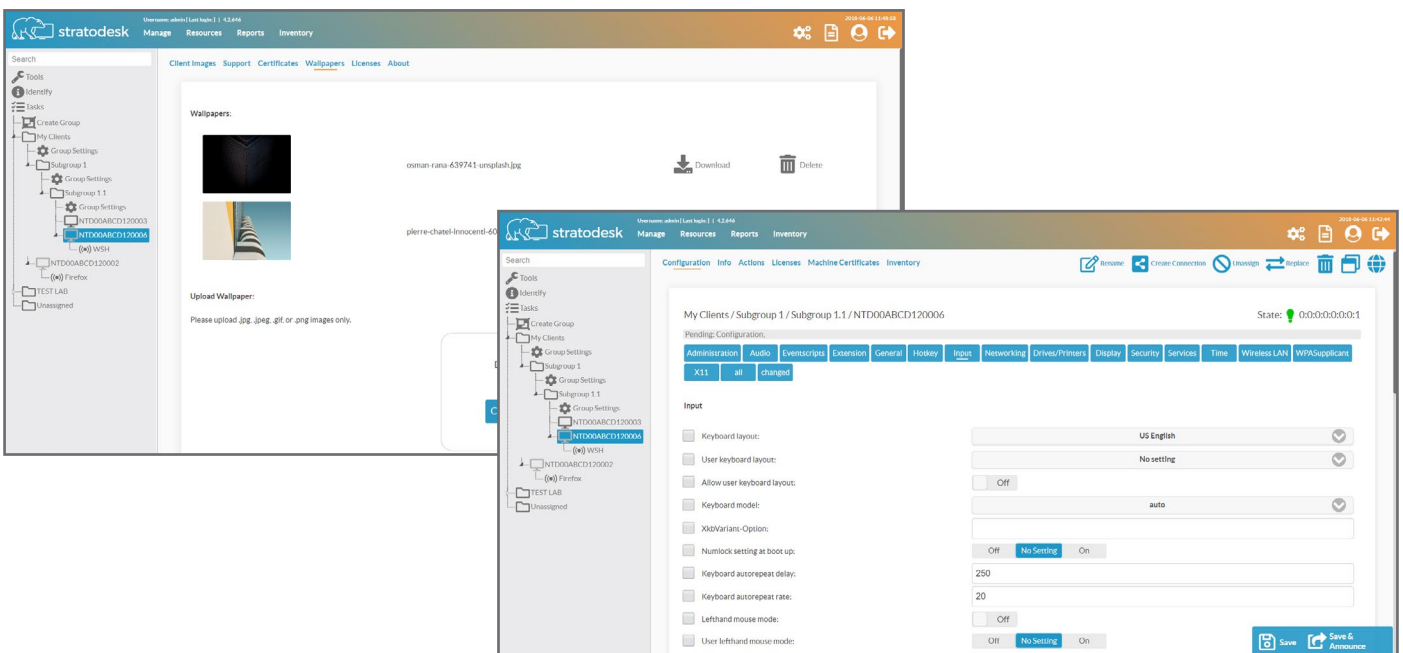
NoTouch is a registered trademark of Stratodesk Corp. All hardware and software names are brand names or registered trademarks of their respective manufacturers. Errors and omissions excepted. © 2021 Stratodesk Corp., all rights reserved.

» Stratodesk NoTouch Center Overview

Stratodesk NoTouch Center is the browser based administration software that enables IT system administrators to manage, configure and update Stratodesk NoTouch endpoints. By delivering complete control over Stratodesk NoTouch endpoints, Stratodesk NoTouch Center enables modern, dispersed workforces while aiding in compliance and protecting sensitive data.

Additionally, Stratodesk NoTouch Center supports settings inheritance, and groups can be created, configured and kept in sync easily. Stratodesk NoTouch Center supports multiple-user roles, role based access controls (RBAC) monitoring, asset management, inventory, helpdesk, multi-factor authentication (MFA) and additional features that are necessary in modern, dispersed workforce deployments.

Ultimately, IT leaders use Stratodesk NoTouch Center to reduce IT hours while keeping VDI and DaaS environments operating at peak performance. It is also the only cloud native thin client management solution, giving you complete flexibility in your endpoint deployment while delivering additional benefits including automatically applied updates and cloud auto-enrollment. Another first, Stratodesk NoTouch Center is the first, self provisioned, cloud native thin client management solution available within the Microsoft Azure Marketplace. Stratodesk also offers Stratodesk NoTouch Cloud – available as a service and hosted on Amazon Work Spaces.



» Stratodesk Virtual Appliance: Client Hosting and VDI Management

The Stratodesk Virtual Appliance, with Stratodesk NoTouch Center included, simplifies VDI architecture and streamlines VDI administration. The 64-bit, Linux-based appliance comes preconfigured to run in your preferred environment including VMware vSphere/ESXi, Citrix Hypervisor, Nutanix AHV and Microsoft Hyper-V.

What's more, Stratodesk Virtual Appliance includes a pre-boot execution environment (PXE) used to bring up Stratodesk NoTouch OS on

diskless machines. An easy-to-use, web-based administration interface makes it easy to perform tasks such as updating endpoints and backing up the virtual appliance. Stratodesk Virtual Appliance can also store files locally for update distribution and network boot – no external database needed.

With PXE boot, you can also boot Stratodesk NoTouch OS in Live Mode on your machines, or via Stratodesk NoTouch GO, enabling BYOD, without erasing your devices' native operating systems.

» Stratodesk NoTouch Center Features and Benefits

Central management

Easy to administer. Settings can be made with just one click. Efficient and user friendly.

Management of x64, x86 and ARM devices

Use Stratodesk NoTouch Center or Stratodesk NoTouch Cloud to manage your entire network of x86 and ARM devices, including Raspberry Pis and Citrix Workspace Hubs, from the cloud or from your on-premise VA.

Pre-installed in the Stratodesk Virtual Appliance

Stratodesk NoTouch Center comes pre-installed in a virtual appliance for easy deployment and setup.

PXE-server included in Virtual Appliance

Install Stratodesk NoTouch Center onto thousands of devices instantly. Enable installation onto diskless machines by booting directly from the network. Boot Live without overwriting native operating systems on endpoint devices.

MSI installer

Install Stratodesk NoTouch Center via MSI installer and replace windows on endpoint devices.

Auto-assign

Automatically enroll devices into your environment with Auto-assign.

Easy wireless and LAN configuration

Stratodesk NoTouch Center supports wireless and LAN configurations to allow seamless interaction between devices and can connect to up to 4 VLANS.

Group based administration and inheritance of settings

Clients moved into groups inherit settings from their new group in order to ensure efficient configuration and setup.

Browser based

Access Stratodesk NoTouch Center from any device via web browser.

Uniform user interface

Stratodesk NoTouch has the same look and feel across its entire product suite. Benefit from one intuitive user experience whether accessing Stratodesk NoTouch Center or Stratodesk NoTouch OS.

Multiple-User Support and Rights Management

User management for diverse administration tasks and authorization areas.

Supports Directory Services

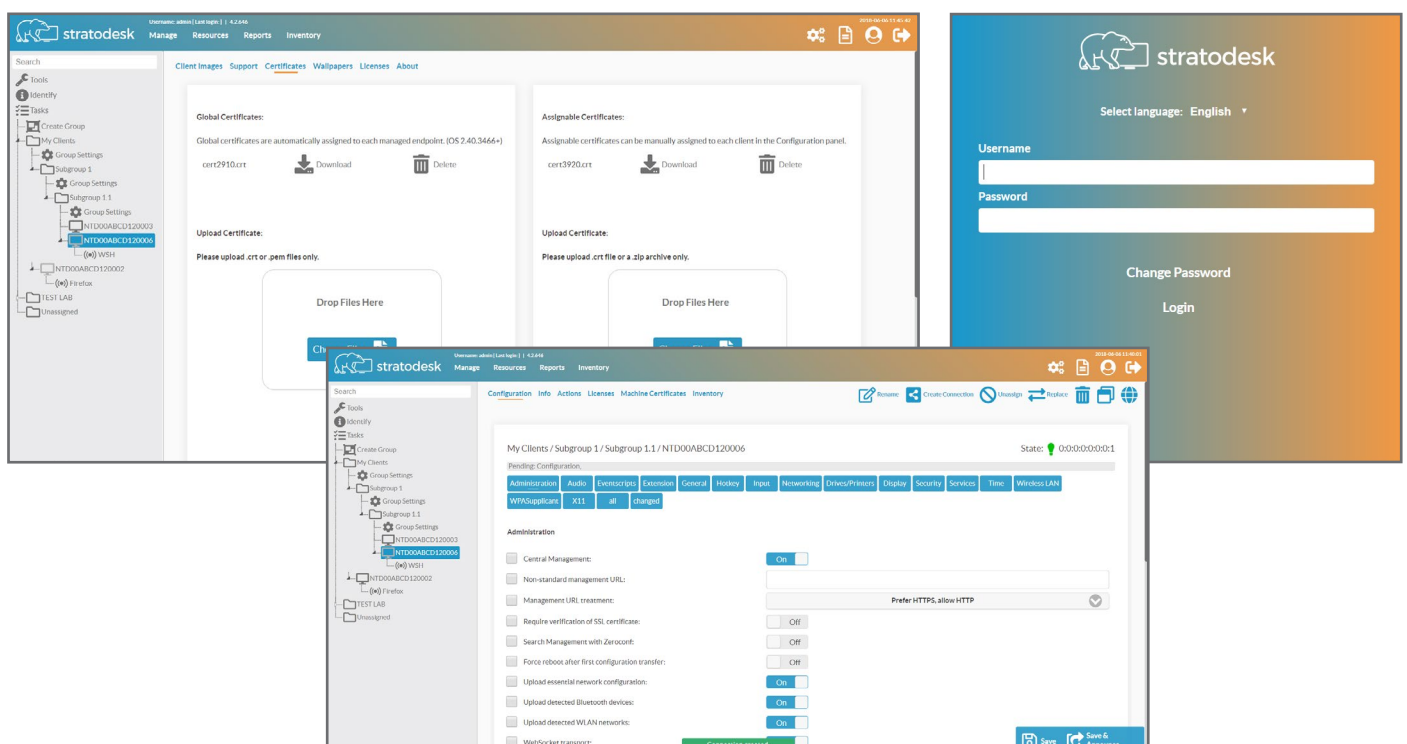
Microsoft® Active Directory or Novell® eDirectory.

Supports various databases

Use company wide databases (Oracle, My SQL). MySQL database is included, installed and configured by default.

Real-Time Device Monitoring and Tactical Overview

The Stratodesk NoTouch Center dashboard shows a tactical overview of your system at a glance and enables you to easily drill down into important data like the system load, distribution of images, and article numbers.



» Stratodesk NoTouch Center Features and Benefits (cont'd)

Reporting tool

With the flexible reporting tool you are able to analyze your system and use templates including hardware inventory lists. Reports can be generated and automatically sent via email.

Asset management and peripheral inventory

Automatically capture all of your hardware information including USB devices, monitors and more. See your peripherals at a glance in one location.

File hosting

Stratodesk NoTouch Center can host customer files including Certificates and desktop images in order to distribute them to client machines.

Certificate handling

Centrally manage global and machine certificates with Stratodesk NoTouch Center. Easily drag and drop certificates from your desktop into Stratodesk NoTouch Center.

Task automation

Automatically schedule periodic tasks or periodic script execution.

Imprivata manageability

Stratodesk NoTouch Center supports Imprivata features and allows you to centrally manage Agent Type.

Realtime Endpoint Analysis

Monitor your Stratodesk NoTouch endpoints in real time with third party tools from ControlUp, Lakeside and Liquidware.

Background Image

Certification of SSL, Debug Logging, and Auto-Hide Kiosk Login Screen.

Authentication and Single Sign-On support

Enable authentication and Single Sign-On support with Imprivata, Evidian, Caradigm and others.

Scripting engine

Although scripting is only needed in exceptional circumstances, Stratodesk NoTouch Center supports various scripting languages used to control endpoints.

By default, Stratodesk NoTouch Center comes with support for JavaScript, Python and Lua. The standard Java scripting interface JSR-223 [1][2] is used, allowing you to easily extend support for other languages such as: Ruby, Clojure and others that provide JSR-223 bindings.

Customizable look and feel

Configure endpoints to have a quasi-invisible local GUI. Take users directly into a VDI session, or to a powerful local desktop with advanced branding capabilities for your organization.

Auto discovery and auto grouping

Clients can be automatically assigned to a group based on subnets, hardware (MAC Addresses) location and ownership, user defined values and email addresses.

Secure HTTPS/SSL based communication

Certificate based, encrypted communication between Stratodesk NoTouch Center and clients.

Automated job scheduling and task planning

Job scheduling enables the system administrator to comfortably execute actions at predefined times without disrupting day-to-day operations..

Automated remote actions

Shutdown, turn-on LAN, updates, and message sending to a specific device can be done remotely.

Remote helpdesk

Shadow users desktops securely using HTML5 based NoVNC to get accurate and real time technical support.

Client identify

Find devices easily via user keystroke.

Fast search and filter functions

Find desktops and designated attributes in an instant.

Highly scalable

Stratodesk NoTouch Center scales indefinitely –easily manage networks with thousands of devices and incorporate new devices when you add them.

Update distribution

Firmware image repository. Cascading/satellite self replication and mirroring